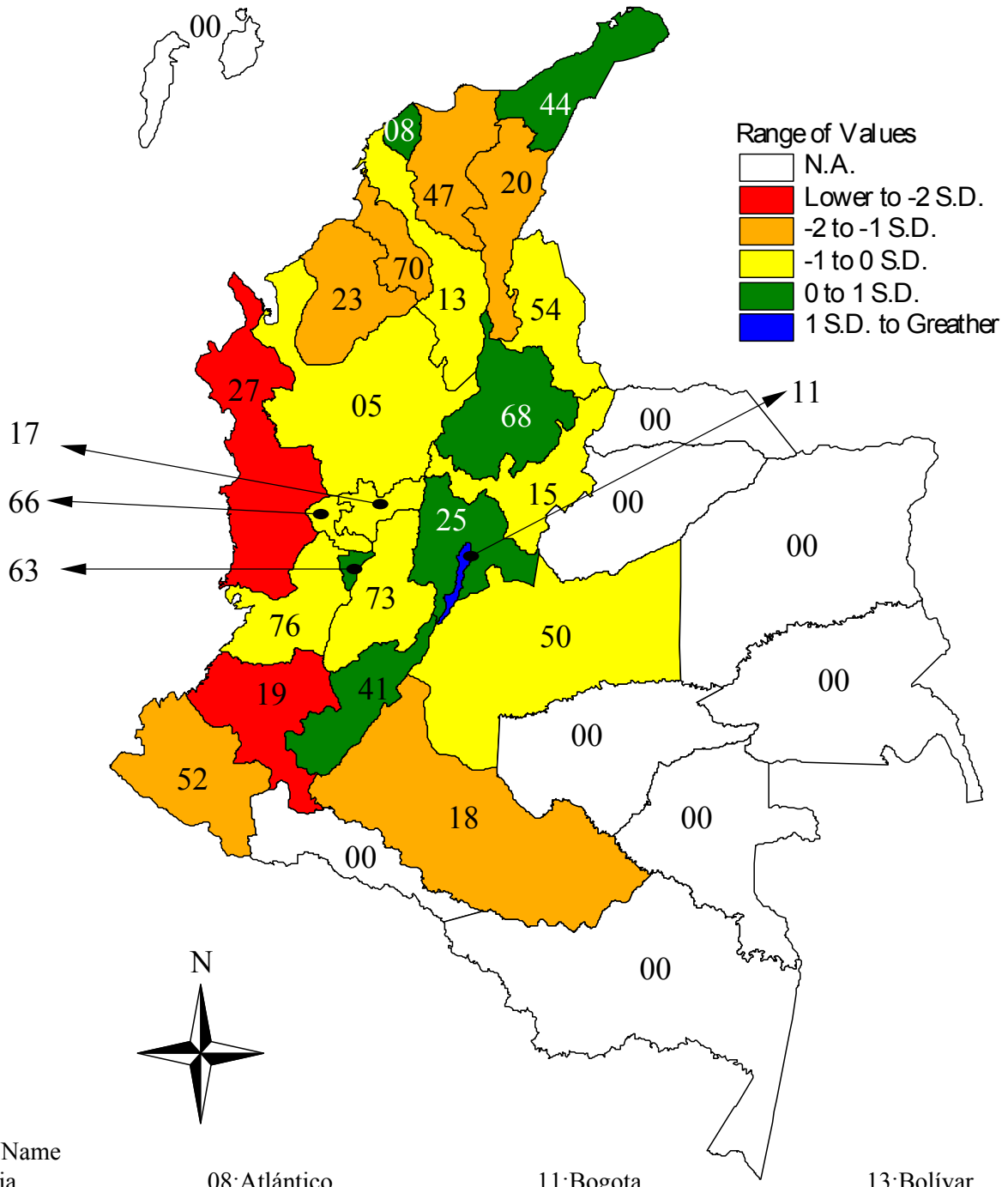


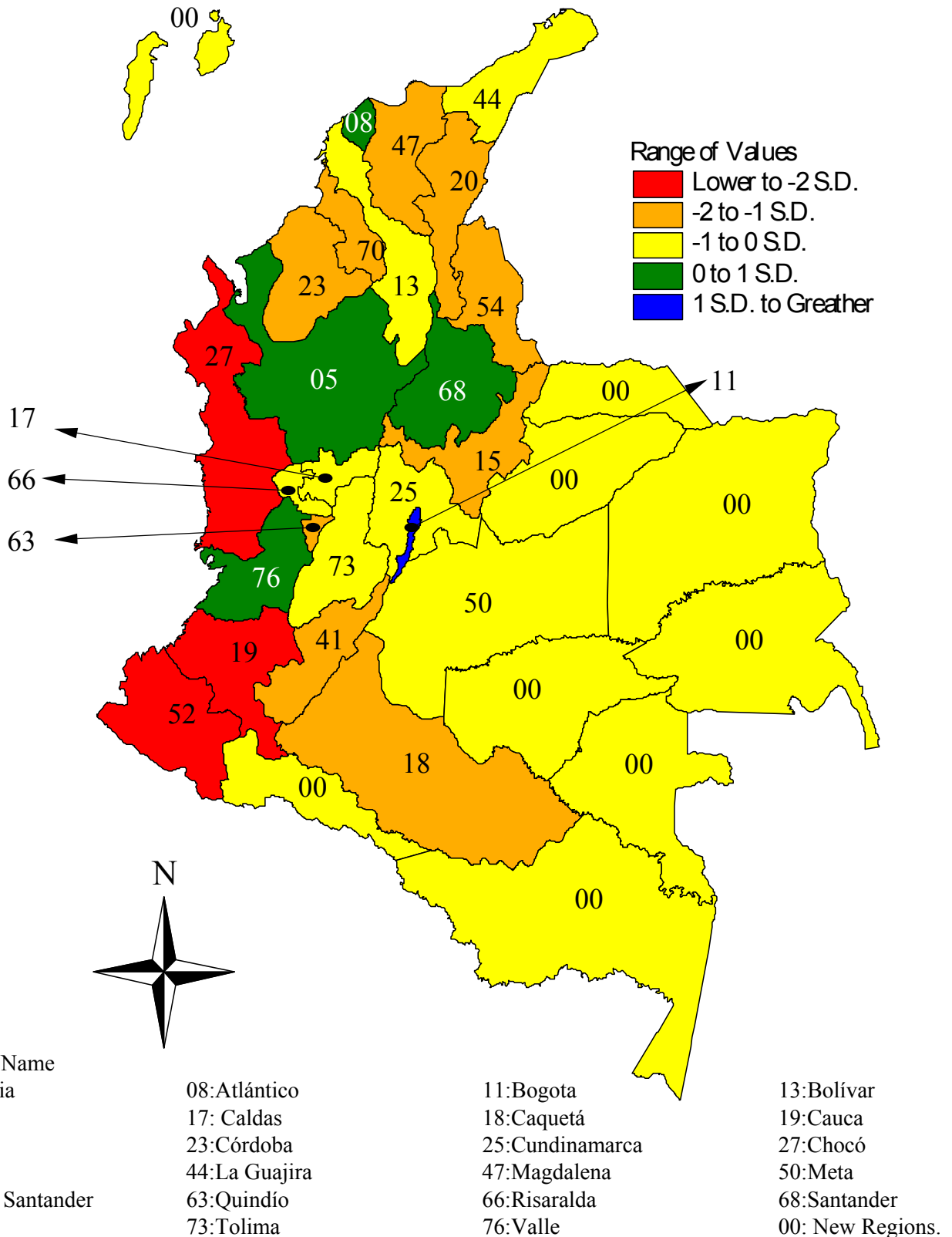
MAP 1 : COLOMBIA. HDI, 1991



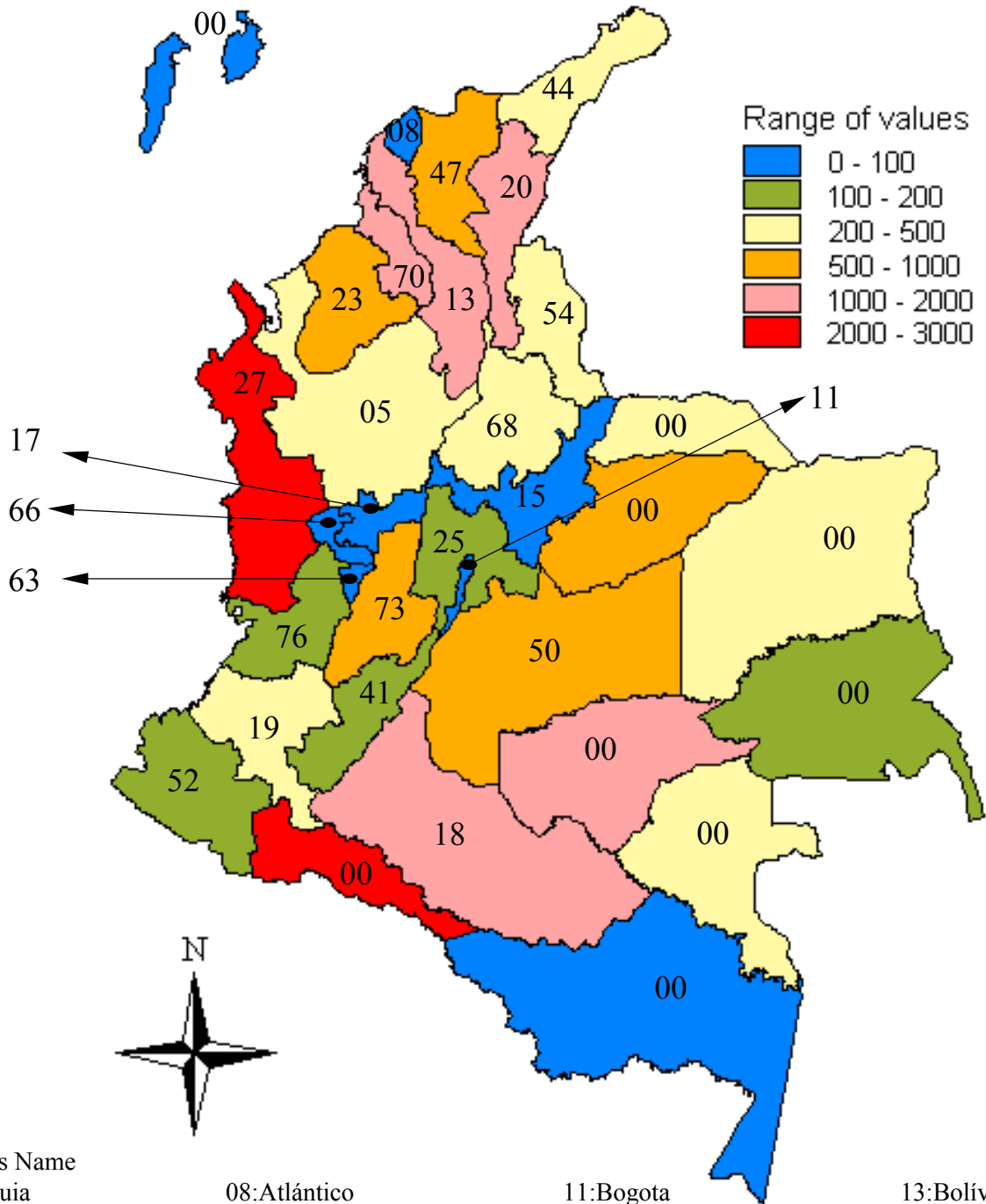
Provinces's Name

- | | | | |
|-----------------------|---------------|-----------------|------------------|
| 05: Antioquia | 08:Atlántico | 11:Bogota | 13: Bolívar |
| 15: Boyacá | 17: Caldas | 18:Caquetá | 19:Cauca |
| 20:Cesar | 23:Córdoba | 25:Cundinamarca | 27:Chocó |
| 41:Huila | 44:La Guajira | 47:Magdalena | 50:Meta |
| 54:Norte de Santander | 63:Quindío | 66:Risaralda | 68:Santander |
| 70:Sucre | 73:Tolima | 76:Valle | 00: New Regions. |

MAP 2 : COLOMBIA. HDI, 2001



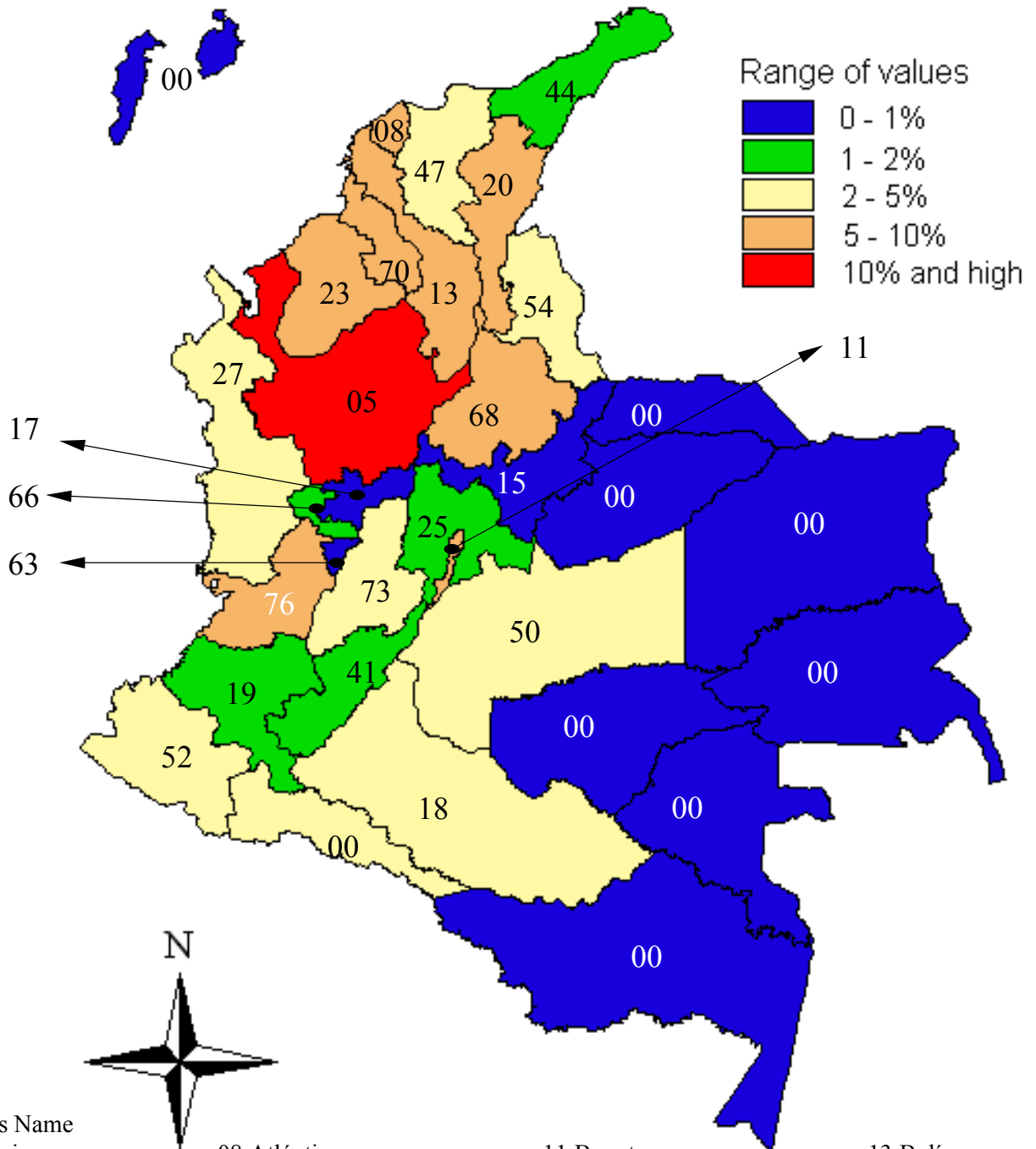
MAP 3 : People Less than 18 years old Displaced (Rate by 100.000 inhabitants)



Provinces's Name

05: Antioquia	08:Atlántico	11:Bogota	13:Bolívar
15: Boyacá	17: Caldas	18:Caquetá	19:Cauca
20:Cesar	23:Córdoba	25:Cundinamarca	27:Chocó
41:Huila	44:La Guajira	47:Magdalena	50:Meta
54:Norte de Santander	63:Quindío	66:Risaralda	68:Santander
70:Sucre	73:Tolima	76:Valle	00: New Regions.

MAP 4: Receivers of Immigrants Fleeing (% in Internal Displacement of People less than 18 years old)



Provinces's Name

05: Antioquia

15: Boyacá

20: Cesar

41: Huila

54: Norte de Santander

70: Sucre

08: Atlántico

17: Caldas

23: Córdoba

44: La Guajira

63: Quindío

73: Tolima

11: Bogota

18: Caquetá

25: Cundinamarca

47: Magdalena

66: Risaralda

76: Valle

13: Bolívar

19: Cauca

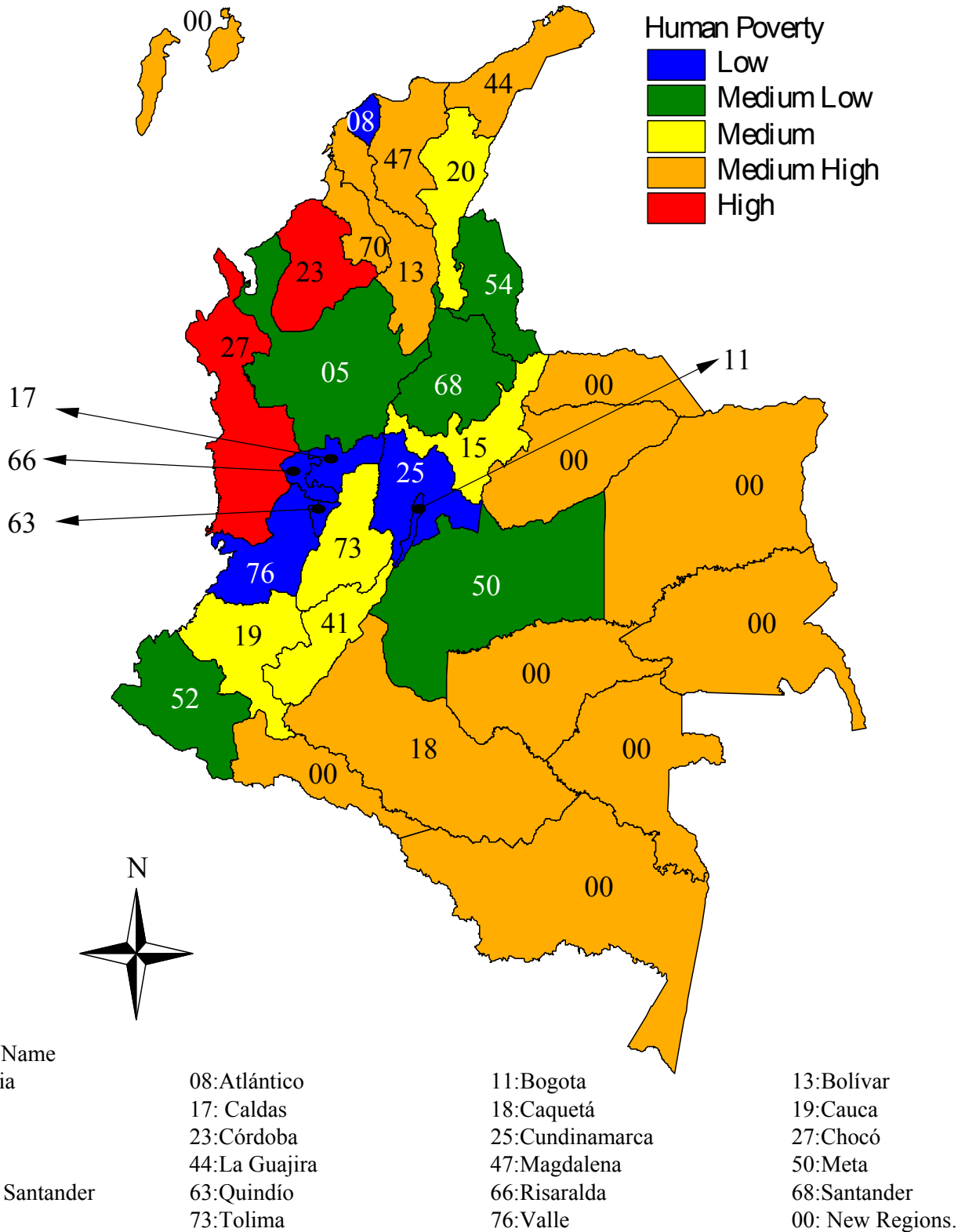
27: Chocó

50: Meta

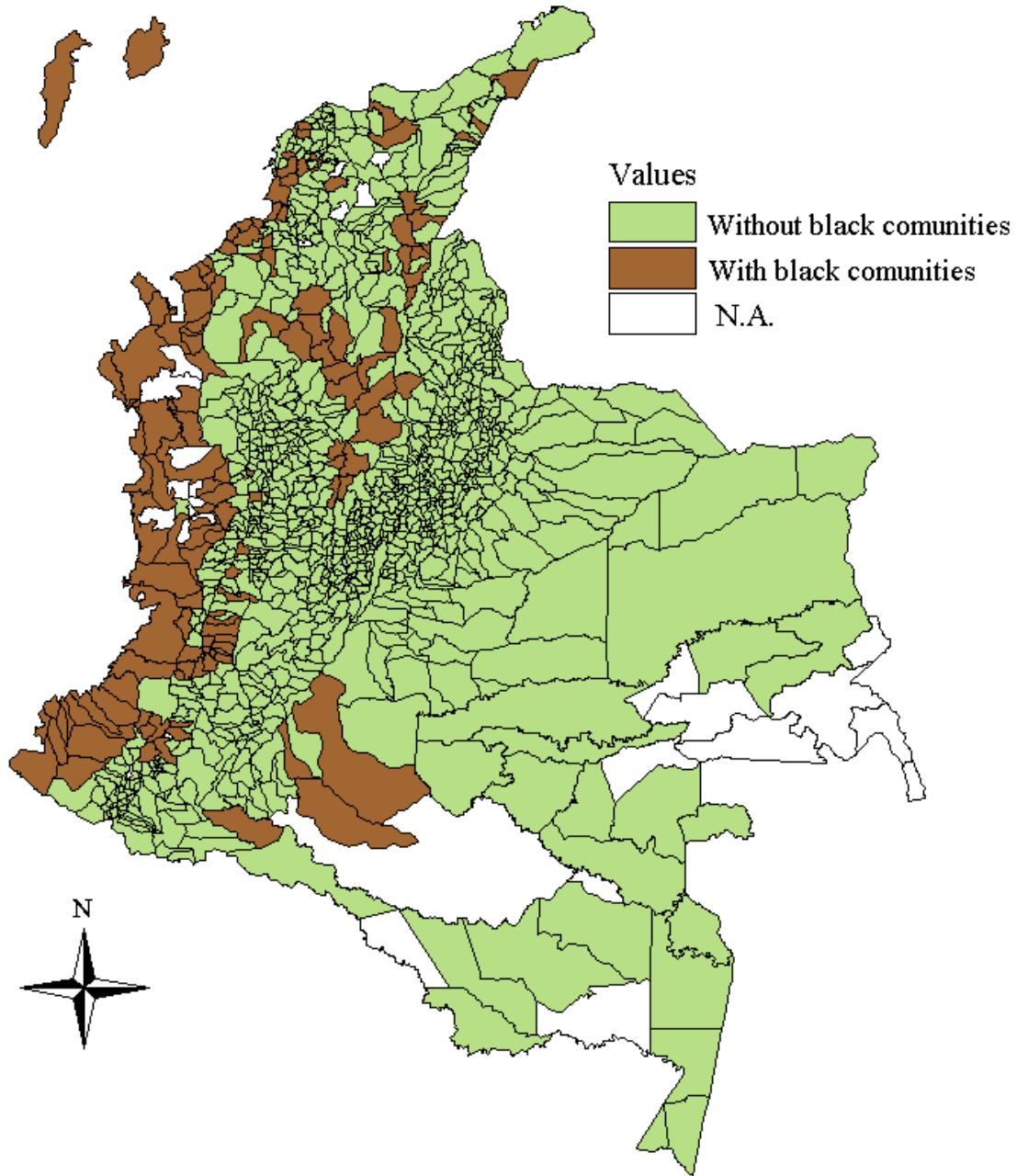
68: Santander

00: New Regions.

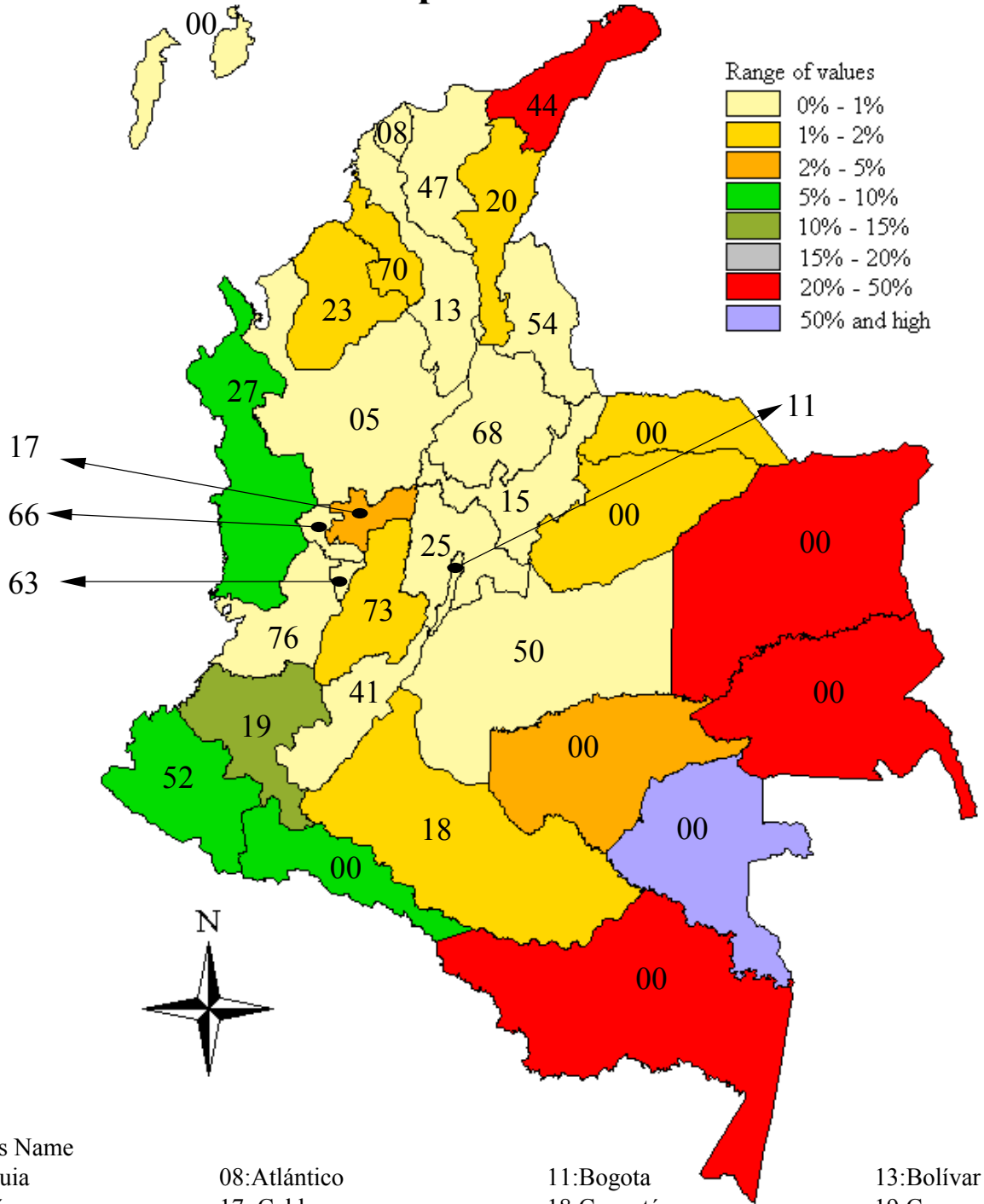
MAP 5 : COLOMBIA. HPI, 1999



MAP 6 : Presences of Black Communities by Municipalities



MAP 7 : Indigenous as a Percentage of Total Population

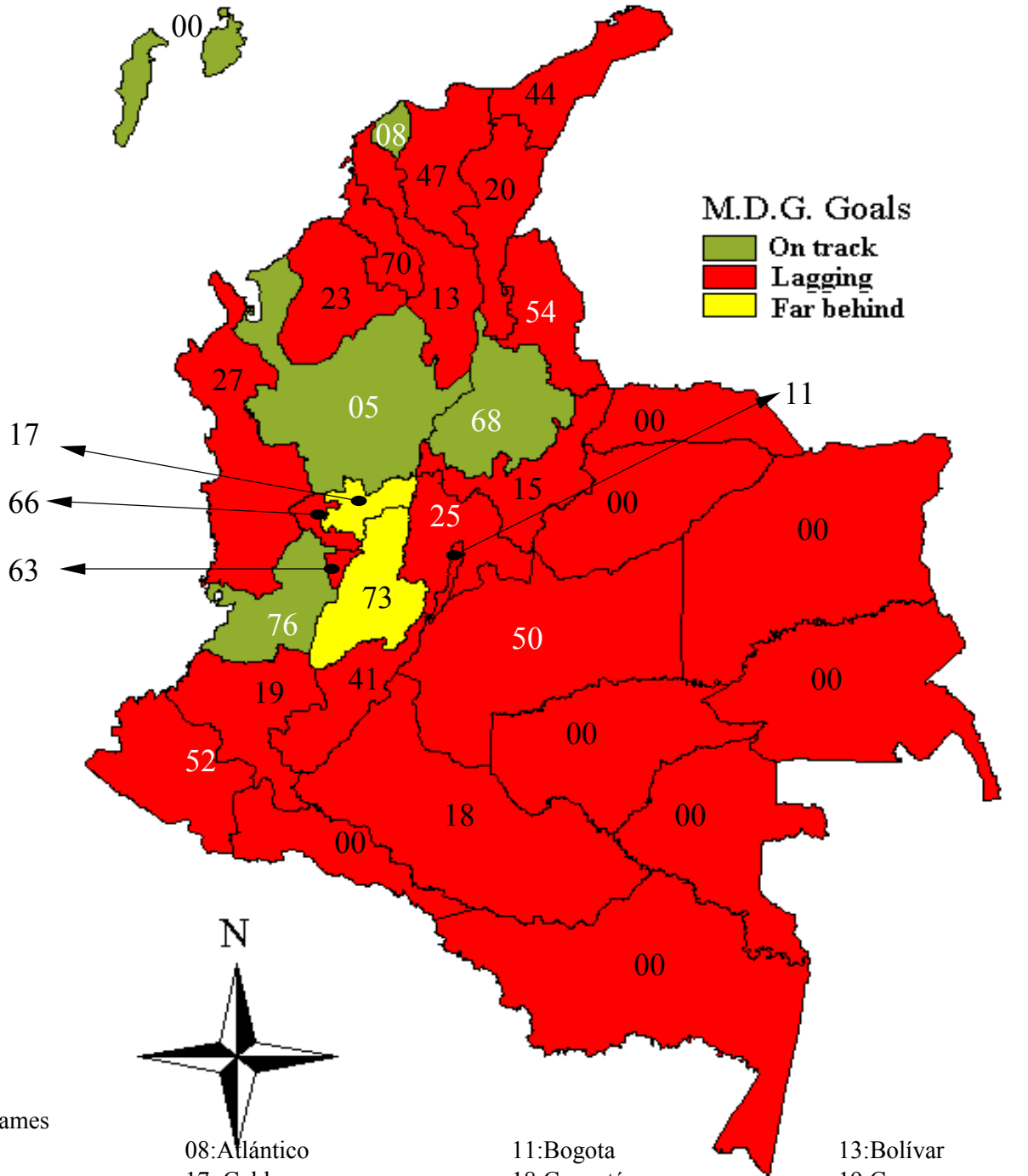


Provinces's Name

- | | | | |
|-----------------------|---------------|-----------------|------------------|
| 05: Antioquia | 08:Atlántico | 11:Bogota | 13:Bolívar |
| 15: Boyacá | 17: Caldas | 18:Caquetá | 19:Cauca |
| 20:Cesar | 23:Córdoba | 25:Cundinamarca | 27:Chocó |
| 41:Huila | 44:La Guajira | 47:Magdalena | 50:Meta |
| 54:Norte de Santander | 63:Quindío | 66:Risaralda | 68:Santander |
| 70:Sucre | 73:Tolima | 76:Valle | 00: New Regions. |

MAP 8 : COLOMBIA.

Under-One Mortality Rate

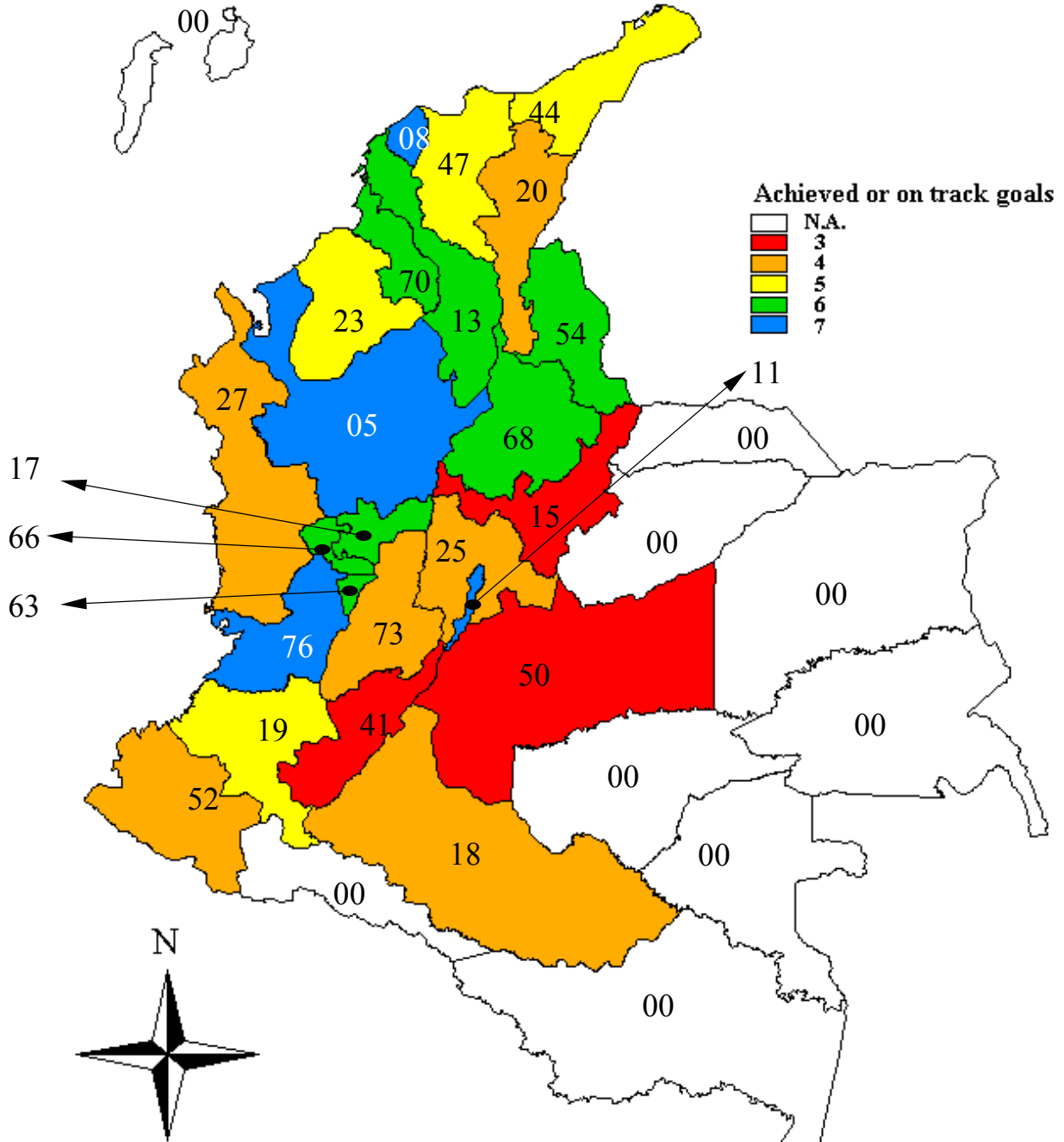


Provinces's Names

- | | | | |
|-----------------------|---------------|-----------------|------------------|
| 05: Antioquia | 08:Atlántico | 11:Bogota | 13:Bolívar |
| 15: Boyacá | 17: Caldas | 18:Caquetá | 19:Cauca |
| 20:Cesar | 23:Córdoba | 25:Cundinamarca | 27:Chocó |
| 41:Huila | 44:La Guajira | 47:Magdalena | 50:Meta |
| 54:Norte de Santander | 63:Quindío | 66:Risaralda | 68:Santander |
| 70:Sucre | 73:Tolima | 76:Valle | 00: New Regions. |

MAP 9

Assessing Colombia's Progress to meet M.D.G's



Provinces's Name

05: Antioquia

15: Boyacá

20: Cesar

41: Huila

54: Norte de Santander

70: Sucre

08: Atlántico

17: Caldas

23: Córdoba

44: La Guajira

63: Quindío

73: Tolima

11: Bogota

18: Caquetá

25: Cundinamarca

47: Magdalena

66: Risaralda

76: Valle

13: Bolívar

19: Cauca

27: Chocó

50: Meta

68: Santander

00: New Regions.